



Ehsan Abushadi

photo credit + source

+ or -



pattern

Cantilevered street facade

Ehsan Abushadi

name

key players

street users, contractors

importance rank

minor priority

general problems



general potentials



description / background

Majority of buildings in ard el lewa have a recessed ground floor to allow for a wider street while not reducing floor area of storey above. This also allows for shading of the building entrance. However, no balance between shading and natural lighting.

smaller patterns

shading, natural lighting, pedestrianism

larger patterns

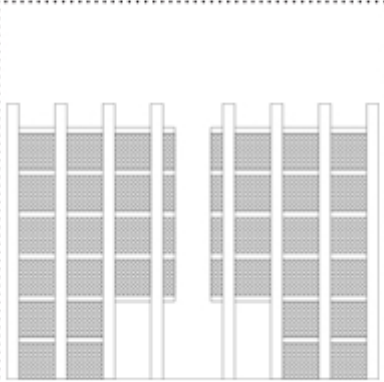
real estate, apartment size, macro-economics

problem / potential

It is a potential make streets even wider, however, it is a problem as it greatly reduces the space between buildings and given their heights, can lead to poor urban ventilation and a lack of sunlight which is essential to those that do not leave their neighbourhoods

solution / tool(s) to optimize this pattern:

illustration



tool 1

enlarge recess

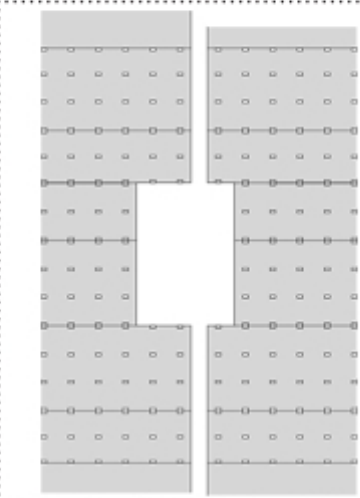
description

Recess building an additional module and give recess double height. This allows for more activities and/or less cogestion, and improves ventilation due to a larger volume of air.

new key players

Citizens, developers

illustration



tool 2

create urban pockets

description

Every couple of buildings buildings should make way for an urban pocket or courtyard which aids in ventilation as well as creating public spaces reminiscent of the Islamic urban pattern.

new key players

Citizens, developers

illustration



tool 3

Planting climbing plants

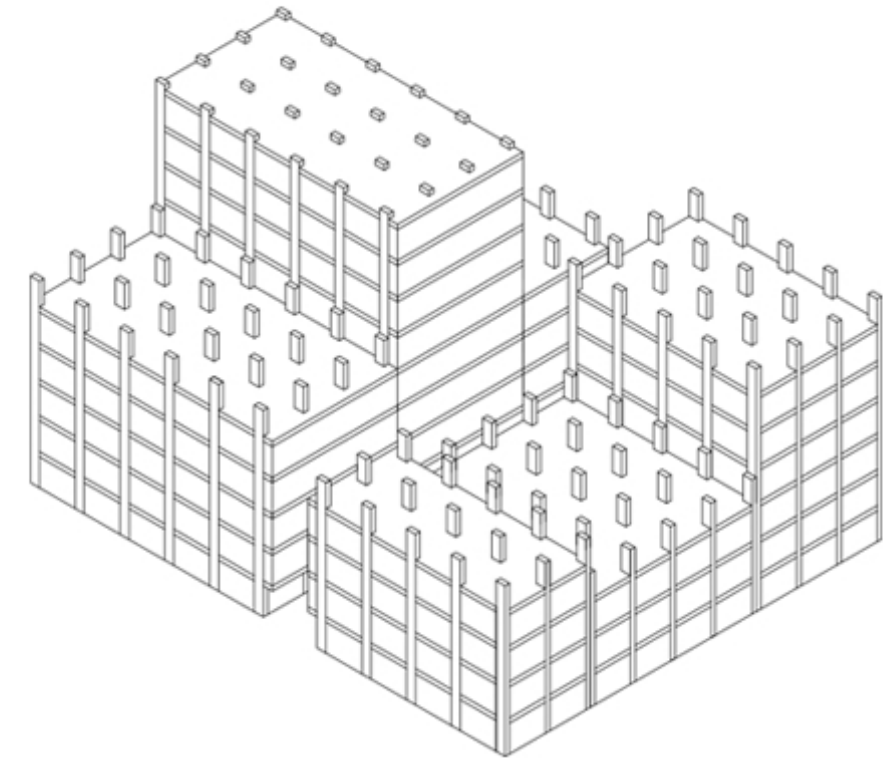
description

Despite green roofs alleviating the absence of vegetation, these 'jungles of concrete and brick', need greenery at street level for environmental, pyschological, and aesthetic, purposes .

new key players

Urban farmers

existing diagram / layout / map



new diagram / layout / map / design / photographs of a 3d model

